



The sixth fruition of over 10 years' endeavor

Bluebird is the first provider of industrial touch mobile computers in the world. Over the past 10 years, we have presented these fruition. The latest models of Bluebird are the sixth outcome of the intensive R&D endeavors.



Touch Mobile Computer

EF400

A true masterpiece that captures the essence of the all touch technology. This pocket sized, touch mobile computer brings true mobility and industrial ruggedness for daily business use. Its sleek ergonomic design gives comfort for user even after prolonged handling and delivers secure indoor / outdoor mobile network connectivity. Take advantage of the EF400's power saving processor to provide longer working cycles and maximize your productivity.



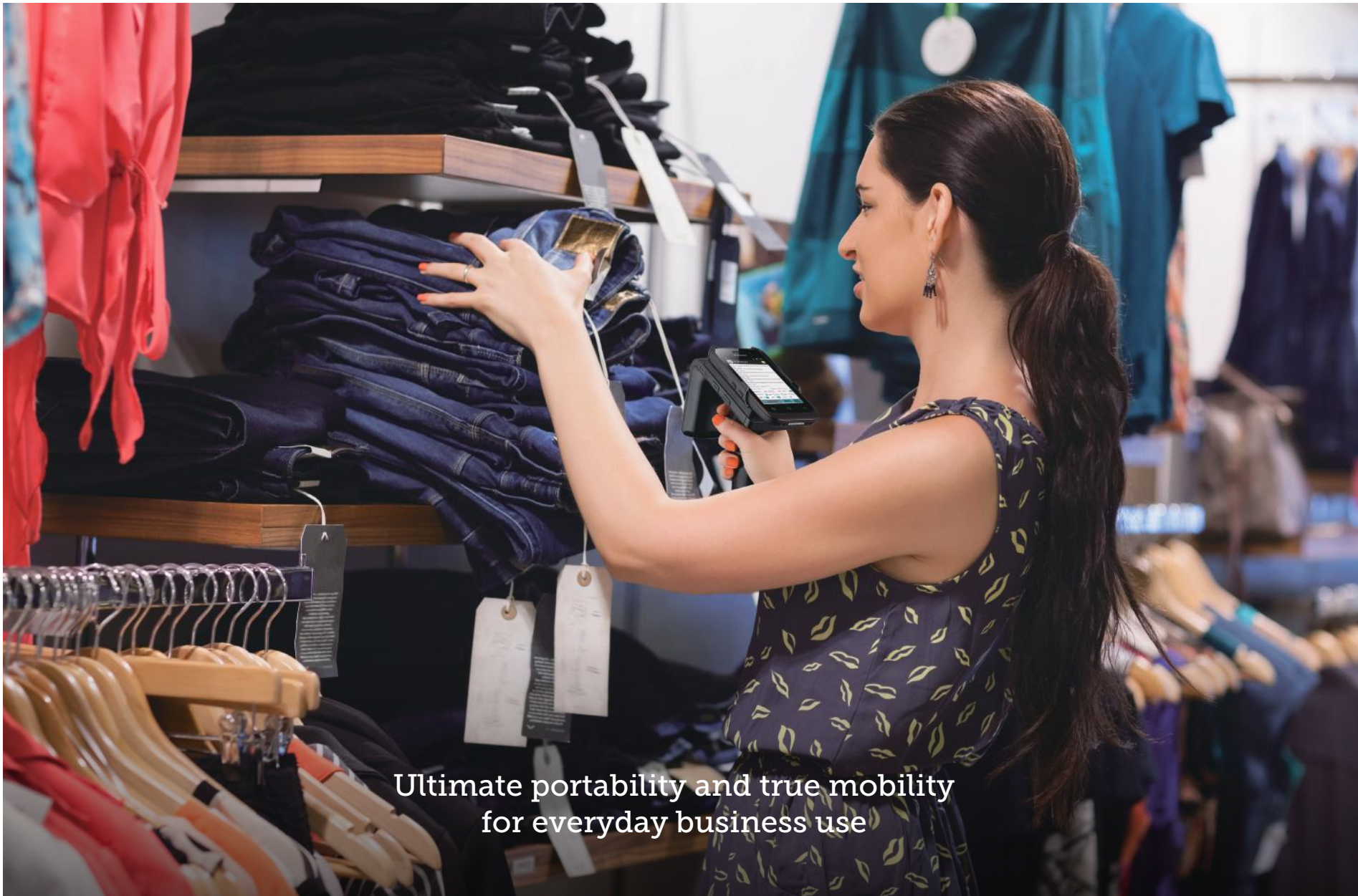


After an intensive 10 year long R&D endeavor, Bluebird is proud to present you the EF400 the pinnacle of a rugged touch mobile computer. As a demonstrated market leader, Bluebird is known for proactive innovation ahead of the consumer market and have introduced the all touch technology before consumer smartphones took advantage of the advancement.

These are daily requirements you carry out your mission



- pocket sized LCD size • multi OS support with EADA™ • light, compact, and slim form factor
- lightning fast Scanning • extended battery, longer battery cycle • simple and easy PTT (Push-To-Talk) communication
- excellent industrial communication network • TankSmith™ Ruggedness • optimized Camera for industrial demands



Ultimate portability and true mobility
for everyday business use

Pocket sized yet powerful

Touch Mobile Computers

EF400

The EF400 is a 4-inch pocket sized touch mobile computer. Compared to the Bluebird EF500, it is more compact and durable with 1.8m drop durability. It fits comfortably in your pocket while delivering true mobility, functionality and durability imperatively necessary for daily requirements. The ergonomic, compact design allows easy grip and handling, preventing serious hand fatigue. It is certainly more mobile-friendly than the other heavy and bulky mobile computers.

The EF400 provides practical benefits for your investment. With the latest technological advancements, it has a powerful Quad Core CPU and runs on the latest Android 5.1, Windows Embedded Handheld 8.1, and Windows 10 IoT Mobile Enterprise. Built to withstand the wear and tear of industrial environments, it contributes to fewer failures and low downtime in the field. The EF400 has enterprise-class durability and functionality necessary for everyday use that leads to reliable and fast performance.

The EF400 is not only about good production due to the tailored optimization of hardware and OS. It has gone through an in depth study with respect to user friendliness and designed to reduce practical issues.

Standing alone as an industrial leader to have been validated and accepted on touch mobile computers, the EF400 is crafted to be the ultimate mobile computer for your successful business.



Key Features



CORNING® GORILLA® GLASS 3

pocket sized LCD size

Built to last in tough environments, the EF400's display has various features to make your operation a smooth and convenient process. Featuring a 4" HD display, it is encased in Corning® Gorilla Glass® 3 with NDR (native damage resistance) and anti-fingerprint sealing. Furthermore, it has sun glare protection and can be operated equally well with a stylus pen or industrial gloves.



EADA™

multi OS support with EADA™

The EF400 runs on the latest Android 5.1(Lollipop) or Windows Embedded 8.1 Handheld, Windows 10 IoT Mobile Enterprise. Customized OS support by Bluebird's dedicated team provides EADA™ (Enhancement with API developing and adjustment) for your powerful OS operation. They will guide you from installation phase unto maximum work capacity to serve you with the most reliable environment for your business to flourish.



light, compact, and slim form factor

Unlike other competitors, Bluebird mobile devices are so light, compact, and slim. Weighing only 200g with a standard battery, this device has been designed ergonomically to ensure comfort even after prolonged use. It also fits right in one hand making the EF400 perfect for mobile operations.



lightning fast Scanning

The EF400's receptive scanners allow high recognition rate and is able to capture and process data at an industrial leading speed. Additionally, all the integrated scanning components offer a wide range of data capturing options, resulting in faster workflow for your staff.



EXTREME
POWER SAVING

extended battery, longer battery cycle

The EF400's extreme power saving takes full advantage of the unique circuit and a low power consumption processor, providing ultimate enterprise mobility without sacrificing performance. The standard battery delivers 3010 mAh.



simple and easy PTT (Push-To-Talk) communication

With a simple, specifically designed PTT button control, one-to-one or one-to-multiple communication is possible. Real-time voice transmission is free using the IP net (TCO). The EF400 has well-defined sound and technical noise canceling that provides crystal clear audio.

Key Features



excellent industrial communication network

Whether indoor or outdoor, you can use it anywhere. Our product provides exceptional 3G and LTE network and processing speed with WLAN 802.11 a/b/g/n with BT 4.0 LE.



TankSmith™ Ruggedness

Bluebird's products guarantee top-notch quality by incorporating the proprietary TankSmith™ technology. All components are designed with industrial use in mind and have been tested in the field to eliminate any possible operational failures. In addition, components will not be discontinued for the next 5 to 7 years to ensure availability and support.

Along with solid particle and liquid ingress protection, the EF400 is purpose-built to withstand rigors of harsh industrial environments.



optimized Camera for industrial demands

A 13.0 megapixel camera with autofocus optimizes industrial imaging solution and performance speed. We provide just what our customers need.



EF400 + RFR900 >

Various and professional options

Experience comprehensive functionality with a number of accessory options. Even cradles have many slots and more battery slots are available, so you don't need extra battery toasters.

For professional options, you can expand your mobile device functions, such as RFID trigger handles (RFR900), wearable scanner trigger ring, and barcode trigger handles.



Barcode trigger handles

In order to achieve productive work process, barcode trigger handles are must-have items. They allow you to capture barcodes faster and easier. They are the right choice where faster process is needed to enhance daily operations.



RFR900, trigger handle type handheld RFID reader

The RFR900 is a wide range RFID reader made in a trigger handle shape. It ensures high recognition rate, user comfort and complete compatibility with Bluebird's mobile computers. It recognizes and processes data at rapid speed, increasing efficiency for all your management needs and identification.



Holster



Wearable scanner trigger ring

The use of wearable computers benefits their workflow directly, in terms of productivity and accuracy. Today, inventory professionals are facing the growing demands of meeting smaller deliveries with more items delivered directly to customers.

Along with the Bluebird wearable computer solutions, workers can pick more orders per day, improving two performances objectives: on-time delivery and order accuracy.

Memo

Memo

Memo



Bluebird designs and manufactures eco friendly products by global environmental regulation.



Bluebird Inc. (Corporate Headquarters)

SEI Tower 12-14F, 39 Eonju-ro 30-gil, Gangnam-gu, Seoul, Korea. Postal#06292

Phone. +82-1577-0778

Fax. +82.2.6499.2242

www.bluebirdcorp.com

Copyright © 1995-2016 Bluebird Inc. All rights reserved. Bluebird Inc. is the designer and manufacturer of Bluebird handheld mobiles. Bluebird logo is registered trademark of Bluebird Inc. Features and specifications are subject to change without prior notice.

product guide notice This Bluebird vertical guide introduces an overview of Bluebird product coverage for Bluebird industrial mobile devices, hardware packages and software support. It doesn't include any other company' terminals, solutions and service. Bluebird may update the content of the Guide from time to time. The new version of this guide and policy will automatically apply once partners renew their technical support and Bluebird support package, etc.

Modifications to this guide and policy Bluebird reserves the legal right to interpret every material made by Bluebird for Bluebird's own profit and modify this guide and policy by posting a revised policy on and/or through the services and providing notice to you. This guide and policy has changed, generally via email (including old email address not changed without any notice to Bluebird) where practicable, and otherwise through the services (such as through a notification on Bluebird online sites or in our mobile applications). Modifications will not apply retroactively. Partners are responsible for reviewing and becoming familiar with any modifications to this policy.
